

Write your name here

Surname

Other names

**Pearson Edexcel**  
**International**  
**Advanced Level**

Centre Number

--	--	--	--	--

Candidate Number

--	--	--	--	--

# Core Mathematics C12

## Advanced Subsidiary

Tuesday 13 January 2015 – Morning  
**Time: 2 hours 30 minutes**

Paper Reference  
**WMA01/01**

**You must have:**

Mathematical Formulae and Statistical Tables (Blue)

Total Marks

--

**Candidates may use any calculator allowed by the regulations of the Joint Council for Qualifications. Calculators must not have the facility for symbolic algebra manipulation, differentiation and integration, or have retrievable mathematical formulae stored in them.**

### Instructions

- Use **black** ink or ball-point pen.
- If pencil is used for diagrams/sketches/graphs it must be dark (HB or B). Coloured pencils and highlighter pens must not be used.
- **Fill in the boxes** at the top of this page with your name, centre number and candidate number.
- Answer **all** questions and ensure that your answers to parts of questions are clearly labelled.
- Answer the questions in the spaces provided – *there may be more space than you need.*
- You should show sufficient working to make your methods clear. Answers without working may not gain full credit.
- When a calculator is used, the answer should be given to an appropriate degree of accuracy.

### Information

- The total mark for this paper is 125.
- The marks for **each** question are shown in brackets – *use this as a guide as to how much time to spend on each question.*

### Advice

- Read each question carefully before you start to answer it.
- Try to answer every question.
- Check your answers if you have time at the end.

Turn over ►

P45057A

©2015 Pearson Education Ltd.

5/5/5/



**PEARSON**

1. Simplify the following expressions fully.

(a)  $(x^6)^{\frac{1}{3}}$

**(1)**

(b)  $\sqrt{2}(x^3) \div \sqrt{\frac{32}{x^2}}$

**(2)**

---

---

---

---

---

---

---

---

---

---

---

---

---

---

---

---

---

---

---

---

---

---

---

---

---

---

---

---

---

---





2.

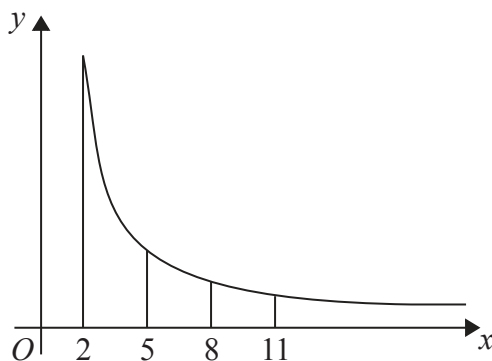


Figure 1

Figure 1 shows a sketch of part of the graph of  $y = \frac{12}{\sqrt{x^2 - 2}}$ ,  $x \geq 2$

The table below gives values of  $y$  rounded to 3 decimal places.

$x$	2	5	8	11
$y$	8.485	2.502	1.524	1.100

- (a) Use the trapezium rule with all the values of  $y$  from the table to find an approximate value, to 2 decimal places, for

$$\int_2^{11} \frac{12}{\sqrt{x^2 - 2}} dx$$

**(4)**

- (b) Use your answer to part (a) to estimate a value for

$$\int_2^{11} \left( 1 + \frac{6}{\sqrt{x^2 - 2}} \right) dx$$

**(3)**

---

---

---

---

---

---

---

---

---

---

---

---

---

---

---

---

---

---

---

---

---

---

---

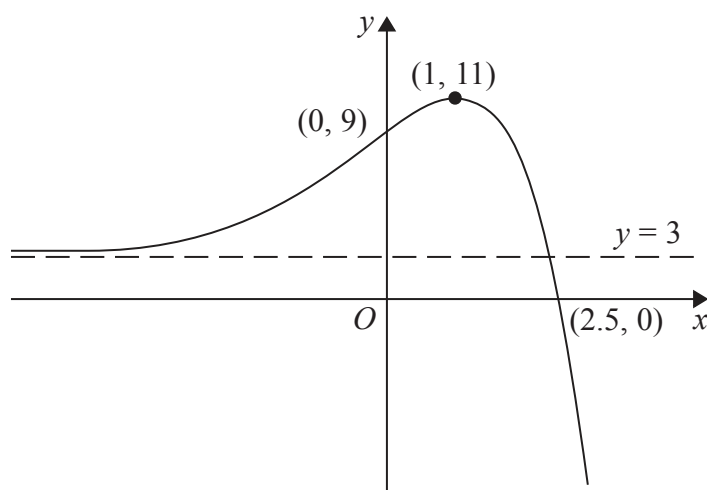
---

---





3.



**Figure 2**

Figure 2 shows a sketch of part of the curve with equation  $y = f(x)$ .  
 The curve crosses the coordinate axes at the points  $(2.5, 0)$  and  $(0, 9)$ , has a stationary point at  $(1, 11)$ , and has an asymptote  $y = 3$

On **separate** diagrams, sketch the curve with equation

(a)  $y = 3f(x)$  **(3)**

(b)  $y = f(-x)$  **(3)**

On each diagram show clearly the coordinates of the points of intersection of the curve with the two coordinate axes, the coordinates of the stationary point, and the equation of the asymptote.



Leave  
blank

**Question 3 continued**

**Q3**

**(Total 6 marks)**



4. (a) Find the first 4 terms in ascending powers of  $x$  of the binomial expansion of

$$\left(2 + \frac{x}{4}\right)^{10}$$

giving each term in its simplest form.

**(4)**

- (b) Use your expansion to find an estimated value for  $2.025^{10}$ , stating the value of  $x$  which you have used and showing your working.

**(3)**

---

---

---

---

---

---

---

---

---

---

---

---

---

---

---

---

---

---

---

---

---

---

---

---

---

---

---





**Question 4 continued**

Lined area for writing the answer to Question 4. The area contains approximately 28 horizontal lines.

**(Total 7 marks)**

Q4







6. Given that

$$2 \log_4(2x + 3) = 1 + \log_4 x + \log_4(2x - 1), \quad x > \frac{1}{2}$$

(a) show that

$$4x^2 - 16x - 9 = 0 \qquad \qquad \qquad (5)$$

(b) Hence solve the equation

$$2 \log_4(2x + 3) = 1 + \log_4 x + \log_4(2x - 1), \quad x > \frac{1}{2} \qquad (2)$$

---

---

---

---

---

---

---

---

---

---

---

---

---

---

---

---

---

---

---

---

---

---

---

---

---

---







**Question 7 continued**

Handwriting practice area with 30 horizontal lines.

**(Total 8 marks)**

Q7



8. A sequence is defined by

$$\begin{aligned} u_1 &= k \\ u_{n+1} &= 3u_n - 12, \quad n \geq 1 \end{aligned}$$

where  $k$  is a constant.

(a) Write down fully simplified expressions for  $u_2$ ,  $u_3$  and  $u_4$  in terms of  $k$ . **(4)**

Given that  $u_4 = 15$

(b) find the value of  $k$ , **(2)**

(c) find  $\sum_{i=1}^4 u_i$ , giving an exact numerical answer. **(3)**

---

---

---

---

---

---

---

---

---

---

---

---

---

---

---

---

---

---

---

---

---

---

---

---

---

---

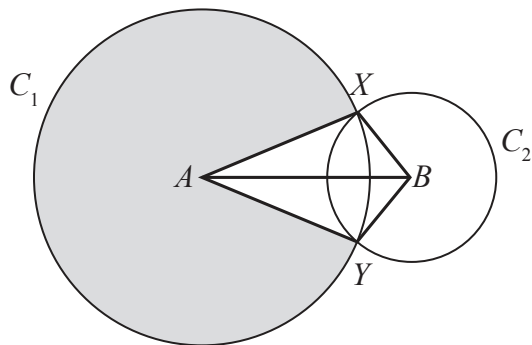
---







9.



**Figure 3**

In Figure 3, the points  $A$  and  $B$  are the centres of the circles  $C_1$  and  $C_2$  respectively. The circle  $C_1$  has radius 10 cm and the circle  $C_2$  has radius 5 cm. The circles intersect at the points  $X$  and  $Y$ , as shown in the figure.

Given that the distance between the centres of the circles is 12 cm,

- (a) calculate the size of the acute angle  $XAB$ , giving your answer in radians to 3 significant figures, (2)
  
- (b) find the area of the major sector of circle  $C_1$ , shown shaded in Figure 3, (3)
  
- (c) find the area of the kite  $AYBX$ . (3)

---

---

---

---

---

---

---

---

---

---

---

---

---

---

---

---

---

---

---

---

---

---

---

---

---

















**Question 10 continued**

Lined area for writing the answer to Question 10.

**(Total 9 marks)**

**Q10**



11.

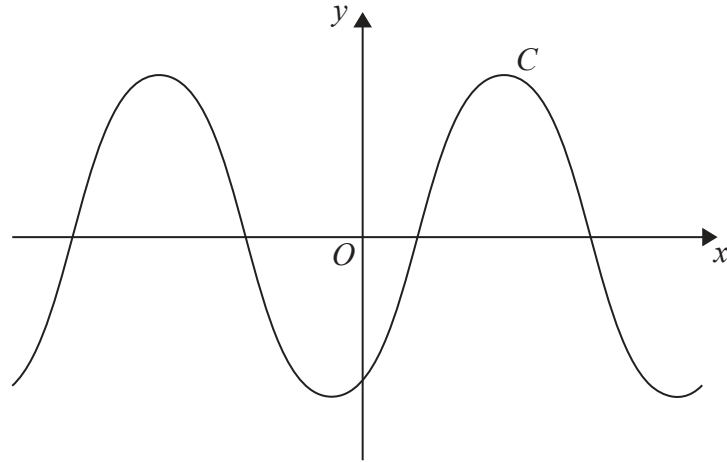


Figure 4

Figure 4 shows a sketch of the curve  $C$  with equation  $y = \sin(x - 60^\circ)$ ,  $-360^\circ \leq x \leq 360^\circ$

(a) Write down the exact coordinates of the points at which  $C$  meets the two coordinate axes. (3)

(b) Solve, for  $-360^\circ \leq x \leq 360^\circ$ ,

$$4 \sin(x - 60^\circ) = \sqrt{6} - \sqrt{2}$$

showing each stage of your working. (5)

---

---

---

---

---

---

---

---

---

---

---

---

---

---

---

---

---

---

---

---

---

---

---

---

---

---

---

---

---

---





12. A business is expected to have a yearly profit of £275 000 for the year 2016. The profit is expected to increase by 10% per year, so that the expected yearly profits form a geometric sequence with common ratio 1.1

(a) Show that the difference between the expected profit for the year 2020 and the expected profit for the year 2021 is £40 300 to the nearest hundred pounds. **(3)**

(b) Find the first year for which the expected yearly profit is more than one million pounds. **(4)**

(c) Find the total expected profits for the years 2016 to 2026 inclusive, giving your answer to the nearest hundred pounds. **(3)**

---

---

---

---

---

---

---

---

---

---

---

---

---

---

---

---

---

---

---

---

---

---

---

---

---

---

---

---

---



























15.

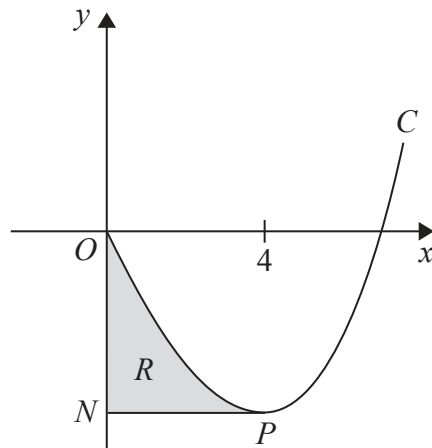


Figure 5

Figure 5 shows a sketch of part of the curve  $C$  with equation

$$y = x^3 + 10x^{\frac{3}{2}} + kx, \quad x \geq 0$$

where  $k$  is a constant.

(a) Find  $\frac{dy}{dx}$  (2)

The point  $P$  on the curve  $C$  is a minimum turning point.  
Given that the  $x$  coordinate of  $P$  is 4

(b) show that  $k = -78$  (2)

The line through  $P$  parallel to the  $x$ -axis cuts the  $y$ -axis at the point  $N$ .

The finite region  $R$ , shown shaded in Figure 5, is bounded by  $C$ , the  $y$ -axis and  $PN$ .

(c) Use integration to find the area of  $R$ . (7)

---

---

---

---

---

---

---

---

---

---

---

---

---

---

---

---

---

---

---

---

---

---

---

---

---

---

---











